

The following revisions are herewith incorporated into the Tender Documents and shall be included in the Tender Price. Where a revision is called for in one drawing or section of the Specification, it shall be considered revised for all related drawings and sections of the Specification. This Addendum shall be returned with other Tender Documents at the time of submission.

This addendum (5 pages) shall form a part of and be included in the Contract Documents for the above titled project and no consideration will be entertained for extras to the Contract due to failure of the contractor to become thoroughly familiar with this addendum.

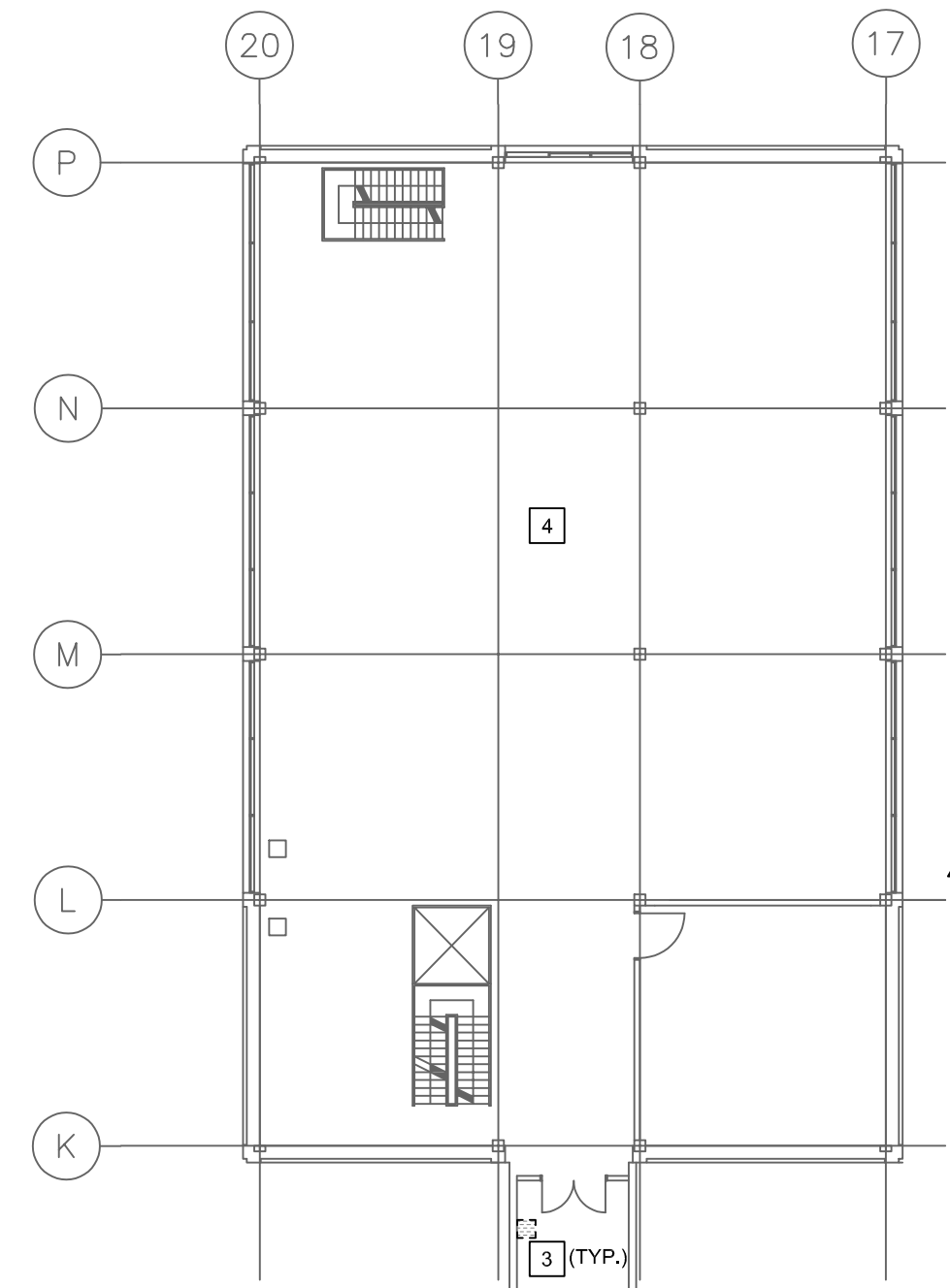
Signify that Addendum has been received by listing the Addendum number and date in the appropriate spaces on the Tender Form.

ELECTRICAL DRAWING:

1. E1.1 CRAWLSPACE FLOOR PLAN- EAST, TUNNEL AND POWERHOUSE –
BASEMENT FLOOR PLAN - ELECTRICAL – DEMOLITION
 - a. Refer to attached drawing for revisions as clouded.
2. E1.2 CRAWLSPACE FLOOR PLAN – WEST – ELECTRICAL – DEMOLITION
 - a. Refer to attached drawing for revisions as clouded.
3. E2.1 CRAWLSPACE FLOOR PLAN- EAST, TUNNEL AND POWERHOUSE –
BASEMENT FLOOR PLAN - ELECTRICAL – NEW CONSTRUCTION
 - a. Refer to attached drawing for revisions as clouded.
4. E2.2 CRAWLSPACE FLOOR PLAN – WEST – ELECTRICAL – NEW CONSTRUCTION
 - a. Refer to attached drawing for revisions as clouded.



1 CRAWLSPACE PLAN - EAST - ELECTRICAL - DEMOLITION
SCALE: 1:100



CRAWLSPACE
KEY PLAN
SCALE: NTS

GENERAL NOTES

- A. FIRE ALARM DEVICES SHOWN ON PLAN ARE BASED ON RECORD DRAWINGS. NOT ALL FIRE ALARM DEVICES ARE SHOWN. RECHECK AND VERIFY AT SITE. COORDINATE AND CONFIRM WITH FIRE ALARM SYSTEM SUPPLIER. REFER TO LATEST FIRE ALARM ANNUAL INSPECTION REPORT. REFER TO FIRE ALARM RISER DIAGRAM FOR FURTHER DETAILS OF SCOPE OF WORK.

DEMOLITION KEY NOTES

1. DISCONNECT AND REMOVE EXISTING HEAT DETECTOR AND BASE. REMOVE EXISTING WIRING AND CONDUIT FOR REUSE. COORDINATE WITH FACILITY MANAGEMENT AND FIRE ALARM SYSTEM SUPPLIER PRIOR TO COMMENCEMENT OF WORK.
2. EXISTING FIRE ALARM DEVICE TO REMAIN, UNLESS OTHERWISE NOTED.
3. REMOVE EXISTING CONVENTIONAL MANUAL PULL STATION FOR REPLACEMENT WITH ADDRESSABLE MANUAL PULL STATION AT HEIGHT TO MEET LATEST CANULC S24 REQUIREMENTS. RETAIN EXISTING WIRING AND CONDUIT FOR REUSE. COORDINATE WITH FACILITY MANAGEMENT AND FIRE ALARM SYSTEM PRIOR TO COMMENCEMENT OF WORK.
4. REFER TO DRAWING E1.1 FOR FIRE ALARM DEVICE LOCATION IN THE POWERHOUSE.
5. REMOVE EXISTING CONVENTIONAL HEAT DETECTOR AND BASE FOR REPLACEMENT WITH NEW ADDRESSABLE HEAT DETECTOR AT SAME LOCATION ON SITE. RETAIN EXISTING WIRE AND CONDUIT FOR REUSE. COORDINATE WITH FIRE ALARM SYSTEM SUPPLIER AND FACILITY MANAGEMENT PRIOR TO COMMENCEMENT OF WORK.

1	ISSUED FOR ADDENDUM #5	TYI	10/12/25
0	ISSUED FOR CONSTRUCTION	TYI	20/10/25
ISSUE/REVISION	DESCRIPTION	BY	DDMMYY

ENGINEERS
GEOSCIENTISTS
MANITOBA
Certificate of Authorization
SMS Engineering Ltd.
No. 166

ORIGINAL
CONTRACT DRAWING
SIGNED AND SEALED BY
T.Y. ILVAS, P. ENG
OCTOBER 17, 2025

Certificate Of Authorization

Engineer's Seal

Project Title
**PROVINCIAL FIRE AND
LIFE SAFETY PROJECT -
VICTORIA HOSPITAL**

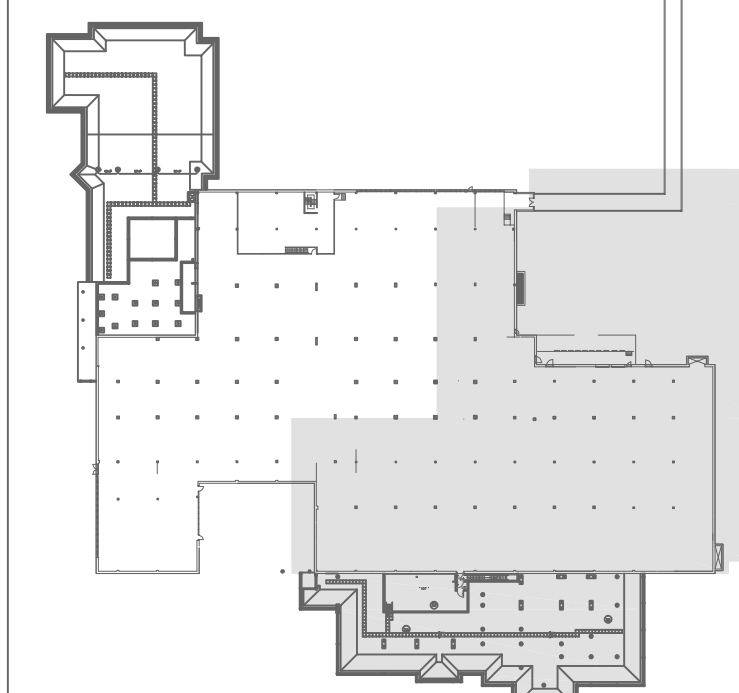
2340 PEMBINA HIGHWAY

Drawing Title
**CRAWLSPACE FLOOR PLAN -
EAST, TUNNEL AND
POWERHOUSE - BASEMENT
FLOOR PLAN - ELECTRICAL -
DEMOLITION**

Drawn By JB	Checked By REL/CA	Approved By TYI
Scale AS SHOWN	Date SEPTEMBER 2025	Project No. 22-001-020
Revision Number	Drawing Number	

1 E1.1

Consultant:



SCALE: NTS

A. FIRE ALARM DEVICES SHOWN ON PLAN ARE BASED ON RECORD DRAWINGS (NOT ALL FIRE ALARM DEVICES ARE SHOWN). RECHECK AND VERIFY AT SITE. COORDINATE AND CONFIRM WITH FIRE ALARM SYSTEM SUPPLIER. REFER TO LATEST FIRE ALARM ANNUAL INSPECTION REPORT. REFER TO FIRE ALARM RISER DIAGRAM FOR FURTHER DETAILS OF SCOPE OF WORK.

1. DISCONNECT AND REMOVE EXISTING HEAT DETECTOR AND BASE. REMOVE EXISTING WIRING AND CONDUIT BACK TO SOURCE. COORDINATE WITH FACILITY MANAGEMENT AND FIRE ALARM SYSTEM SUPPLIER PRIOR TO COMMENCEMENT OF WORK.
2. REMOVE EXISTING CONVENTIONAL MANUAL PULL STATION FOR REPLACEMENT WITH ADDRESSABLE MANUAL PULL STATION AT HEIGHT TO MEET LATEST CAN/UL 524 REQUIREMENTS. RETAIN EXISTING WIRING AND CONDUIT FOR REUSE. COORDINATE WITH FACILITY MANAGEMENT AND FIRE ALARM SYSTEM PRIOR TO COMMENCEMENT OF WORK.
3. REMOVE EXISTING CONVENTIONAL HEAT DETECTOR AND BASE FOR REPLACEMENT WITH NEW ADDRESSABLE HEAT DETECTOR AT SAME LOCATION ON SITE. RETAIN EXISTING WIRE AND CONDUIT FOR RE USE. COORDINATE WITH FIRE ALARM SYSTEM SUPPLIER AND FACILITY MANAGEMENT PRIOR TO COMMENCEMENT OF WORK.

1	ISSUED FOR ADDENDUM #5	TYI	10/12/25
0	ISSUED FOR CONSTRUCTION	TYI	20/10/25
ISSUE / REVISION	DESCRIPTION	BY	DD/MM/YY



ORIGINAL
CONTRACT DRAWING
SIGNED AND SEALED BY
T.Y. ILYAS, P. ENG
OCTOBER 17, 2025

Certificate Of Authorization

Engineer's Se

Project Title
PROVINCIAL FIRE AND
LIFE SAFETY PROJECT -
VICTORIA HOSPITAL

2340 PEMBINA HIGHWAY

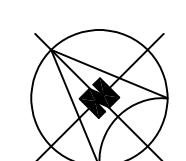
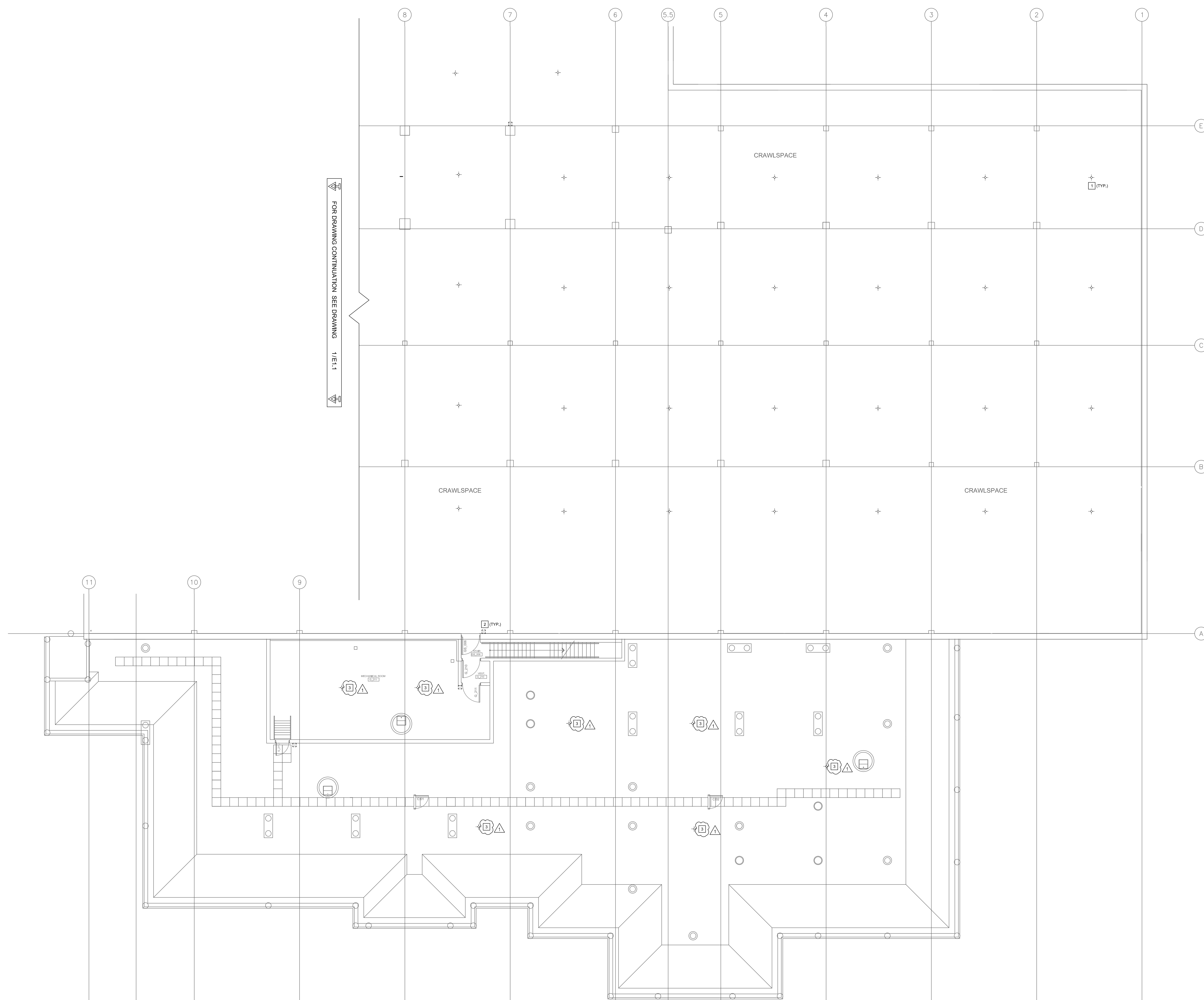
Drawing Title
CRAWLSPACE FLOOR PLAN -
WEST - ELECTRICAL -
DEMOLITION

Drawn By JB	Checked By REL/CA	Approved By TYI
Scale AS SHOWN	Date SEPTEMBER 2025	Project No. 22-001-03

Revision Number	Drawing Number
-----------------	----------------

1 E1.2

Sheet Order
3 OF 31



1 CRAWLSPACE PLAN - WEST - ELECTRICAL - DEMOLITION
F12 SCALE: 1:100

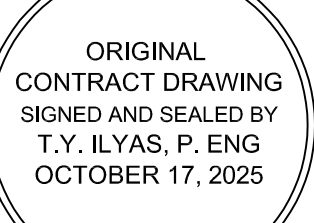


A. FIRE ALARM DEVICES SHOWN ON PLAN ARE BASED ON RECORD DRAWINGS (NOT ALL FIRE ALARM DEVICES ARE SHOWN). RECHECK AND VERIFY AT SITE. COORDINATE AND CONFIRM WITH FIRE ALARM SYSTEM SUPPLIER. REFER TO THE LATEST FIRE ALARM ANNUAL INSPECTION REPORT. REFER TO FIRE ALARM RISER DIAGRAM FOR FURTHER DETAILS OF SCOPE WORK.

1. REPLACE EXISTING CONVENTIONAL HEAT DETECTOR WITH NEW ADDRESSABLE HEAT DETECTOR C/W BASE. CONFIRM EXACT LOCATION WITH FACILITY MANAGEMENT. RECONNECT TO EXISTING CONDUIT AND WIRE THAT WAS MADE AVAILABLE DURING DEMOLITION. EXTEND EXISTING WIRE AND CONDUIT AS REQUIRED.

2. REPLACE EXISTING CONVENTIONAL MANUAL PULL STATION WITH ADDRESSABLE MANUAL PULL STATION AT HEIGHT TO MEET LATEST CANULC 5024 REQUIREMENTS, RECONNECT TO EXISTING WIRE AND CONDUIT THAT WAS MADE AVAILABLE DURING DEMOLITION, EXTEND EXISTING WIRE AND CONDUIT AS REQUIRED. COORDINATE WITH FACILITY MANAGEMENT AND FIRE ALARM SYSTEM SUPPLIER PRIOR TO COMMENCEMENT OF WORK.
3. REFER TO MECHANICAL DRAWINGS FOR PROPOSED SPRINKLER PIPE ROUTING, DISCONNECT, RECONNECT AND RELOCATE ELECTRICAL DEVICES, CONDUIT, WIRING ETC. THAT INTERFERE WITH NEW SPRINKLER PIPE INSTALLATION. AS REQUIRED TO ACCOMMODATE SPRINKLER PIPE INSTALLATION, EXTEND EXISTING WIRE AND CONDUIT AS REQUIRED.

ISSUE / REVISION	DESCRIPTION	BY	DDMMYY
1	ISSUED FOR ADDENDUM #5	TYI	10/12/25
0	ISSUED FOR CONSTRUCTION	TYI	20/10/25



Engineer's Se

Project Title
PROVINCIAL FIRE AND
LIFE SAFETY PROJECT -
VICTORIA HOSPITAL

2340 PEMBINA HIGHWAY

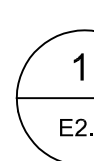
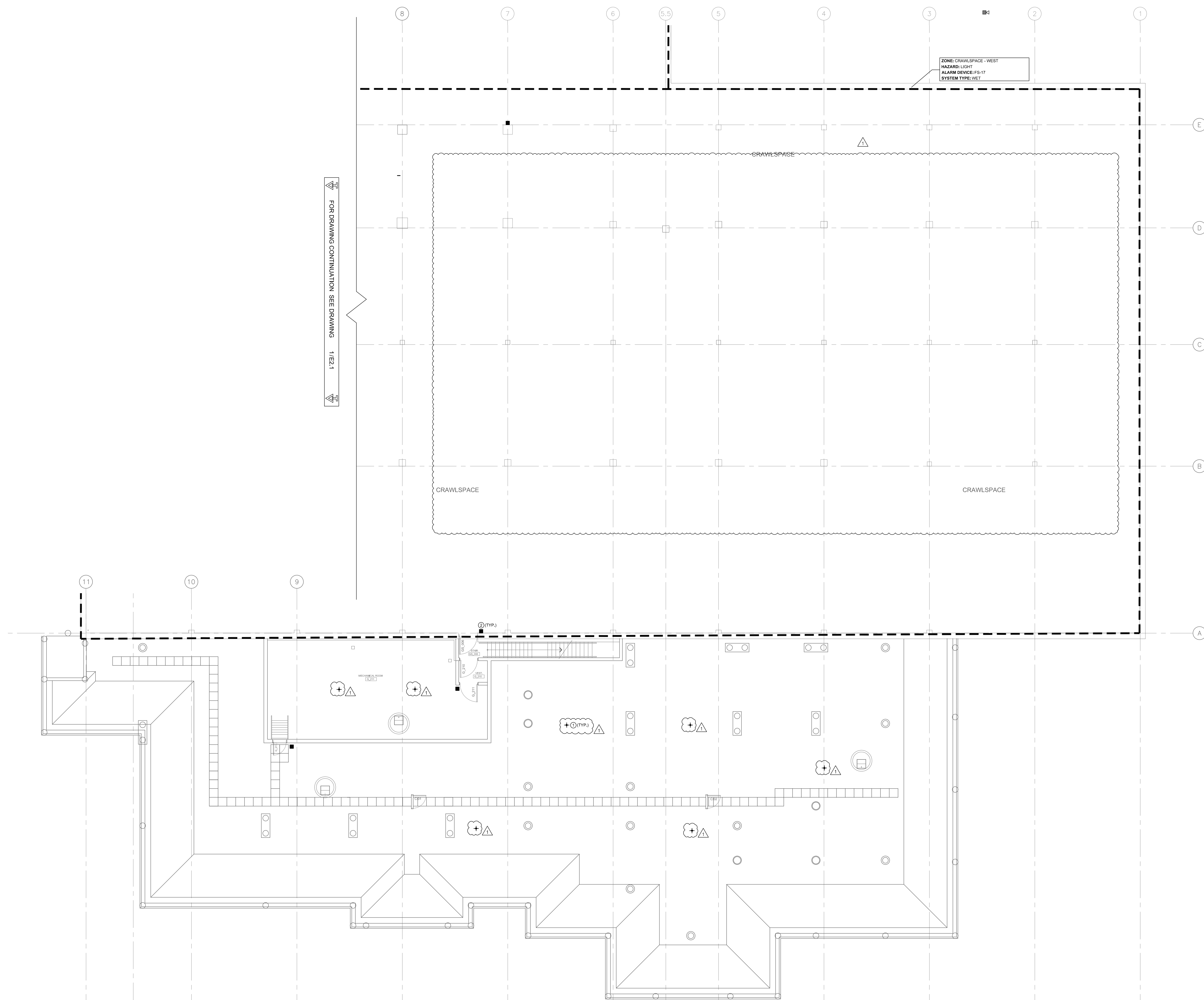
Drawing Title
CRAWLSPACE FLOOR PLAN
WEST - ELECTRICAL - NEW
CONSTRUCTION

Drawn By JB	Checked By REL/CA	Approved By TYI
Scale AS SHOWN	Date SEPTEMBER 2025	Project No. 22-001-03

Revision Number	Drawing Number
-----------------	----------------

1 E2.2

Sheet Order
17 OF 31



1 CRAWLSPACE PLAN - WEST - ELECTRICAL - NEW CONSTRUCTION 3
E2.2 SCALE: 1:100